



Government of India
Ministry of Earth Sciences



India Meteorological Department

PRESS RELEASE-9

Time of issue: 1400 hours IST

Dated: 2nd December, 2024

Sub: Deep Depression weakened into Well marked low pressure area (Remnant of Cyclonic Storm “FENGAL”) over north interior Tamil Nadu

Yesterday’s deep depression over north coastal Tamil Nadu & Puducherry moved west-northwestwards and weakened into a depression over the same region in the same evening (1730 hours IST) of 1st December, 2024. Thereafter, it moved nearly westwards and weakened into a **Well Marked Low Pressure Area** over North Interior Tamil Nadu in the morning (0530 hrs IST) of today, the 2nd December 2024.

The remnant low pressure area is likely to move westwards and emerge into southeast and adjoining eastcentral Arabian Sea off north Kerala-Karnataka coasts around 3rd December 2024.

The system is being continuously monitored in view of its expected emergence into Arabian Sea.

Warnings:

(i) **Rainfall Warning:**

North interior Tamil Nadu: Heavy to very heavy rainfall at a few places with extremely heavy falls at isolated places very likely over ghat districts of Tamil Nadu adjoining to Kerala on 02nd December. It will decrease becoming isolated heavy rainfall on 03rd December.

Kerala: Heavy to very heavy rainfall at a few places with extremely heavy falls at isolated places very likely over Kerala on 02nd December and Heavy to very heavy rainfall at isolated places very likely on 03rd December.

South Interior Karnataka: Heavy to very heavy rainfall with extremely heavy falls at isolated places very likely over South Interior Karnataka on 02nd and isolated heavy rainfall on 03rd December.

Coastal Karnataka: Heavy to very heavy rainfall at isolated places very likely over Coastal Karnataka on 02nd and isolated heavy rainfall on 03rd December.

Rayalaseema: Isolated heavy rainfall very likely over Rayalaseema on 02nd December.

Lakshadweep: Isolated heavy rainfall very likely over Lakshadweep on 03rd & 04th December.

Contact: Cyclone Warning Division, Office of the Director General of Meteorology, India Meteorological Department, Ministry of Earth Sciences, E-mail: cyclonewarningdivision@gmail.com, Website: rsmcnewdelhi.imd.gov.in, Spatial rainfall distribution: Isolated: <25%, A few: 26-50%, Many: 51-75%, Most: 76-100%, Rainfall amount (mm): Heavy rain: 64.5 – 115.5, Very heavy rain: 115.6 – 204.4, Extremely heavy rain: 204.5 or more.

Impact Expected due to heavy rainfall:

- Major damage to Kutchha and minor damage to Pucca roads.
- Some damage to paddy crops, banana, papaya, drum sticks (moringa) trees and orchards.
- Disruption of traffic in major cities due to water logging in roads leading to increased travel time.
- Damage to horticulture and standing crops including vegetable crops in some areas due to inundation.

Action Suggested:

- Check for traffic congestion on your route before leaving for your destination.
- Follow any traffic advisories that are issued in this regard.
- Avoid going to areas that face the water logging problems often.
- Avoid staying in vulnerable structure.

Agromet advisories:

Provide adequate drainage facilities for the removal of excess water from rice, cotton, sugarcane, turmeric, tobacco and vegetable fields, coconut and banana orchards. Provide mechanical support to banana plants to prevent lodging.

- Make arrangements to drain out excess water from the standing crop fields and fruit orchards.
- Harvest the matured crops and keep it in safe place.
- Provide mechanical support to horticultural crops and staking to vegetable crops.

24 hours accumulated realized heavy rainfall (≥ 7 cm) ending at 0830 hours IST of today, the 2nd December is given in Annexure-I.

This is the last press release in association with this system. However, regular bulletins would continue from National Weather Forecasting Centre and concerned regional meteorological centre/state meteorological centres.

Kindly visit www.rsmcnewdelhi.imd.gov.in and www.mausam.imd.gov.in for weather related updates.

Contact: Cyclone Warning Division, Office of the Director General of Meteorology, India Meteorological Department, Ministry of Earth Sciences, E-mail: cyclonewarningdivision@gmail.com, Website: rsmcnewdelhi.imd.gov.in, Spatial rainfall distribution: Isolated: <25%, A few: 26-50%, Many: 51-75%, Most: 76-100%, Rainfall amount (mm): Heavy rain: 64.5 – 115.5, Very heavy rain: 115.6 – 204.4, Extremely heavy rain: 204.5 or more.

24 hours accumulated realised heavy rainfall (≥ 7 cm) ending at 0830 hours IST of today, the 2nd December

Tamilnadu, Puducherry & Karaikal:

Uthangarai (Krishnagiri) 50, Kedar (Villupuram) 42, Soorapattu (Villupuram) 38, Vilupuram (Villupuram) 35, Harur (Dharmapuri) 33, Mundiampakkam (Villupuram), Koliyanur (Villupuram), Thirupalapandal (Kallakurichi) 32 each, Madampoondi (Kallakurichi) 31, Mugaiyur (Villupuram), Valavanur (Villupuram) 30 each, Nemoor (Villupuram), Manampoondi (Villupuram), Kanjanur (Villupuram) 29 each, Vengur (Kallakurichi) 27, Tirukoilur (Kallakurichi) 26, Jambukuttapatti (Krishnagiri), Pochampalli (Krishnagiri) 25 each, Yercaud (Salem) 24, Eraiyur (Kallakurichi), Jamunamarathur (Tiruvannamalai) 23 each, Pambar (Krishnagiri), Manalurpet (Kallakurichi) 21 each, Thandarampettai (Tiruvannamalai), Barur (Krishnagiri), Pappireddipatti (Dharmapuri) 20 each, Penucondapuram (Krishnagiri), Sankarapuram (Kallakurichi) 19 each, Kallakurichi (Kallakurichi) 18, Anandhapuram (Villupuram), Kalayanallur (Kallakurichi) 17 each, Tiruvannamalai (Tiruvannamalai), Panruti (Cuddalore), Dharmapuri (Dharmapuri) 16 each, Moorarpalayam (Kallakurichi), Vanamadevi (Cuddalore), Keelpennathur (Tiruvannamalai), Moongilthuraipattu (Kallakurichi), Ulundurpet (Kallakurichi), Kariyakovil Dam (Salem), Sulangurichi (Kallakurichi), Rishivandhiyam (Kallakurichi), SCS Mill Pillaiyarkuppam (Kallakurichi), Keelpadi (Kallakurichi) 15 each, Virugavoor (Kallakurichi), Nedungal (Krishnagiri), Kattumayilur (Cuddalore) 14 each, Ariyalur (Kallakurichi), Ariyalur Camp Area (Kallakurichi), Kadavanur (Kallakurichi) 13 each, Vepur (Cuddalore), Me Mathur (Cuddalore) 12 each, Thiyagadurgam (Kallakurichi), Pennagaram (Dharmapuri), Semmedu (Villupuram), Manimutharu Dam PWD (Kallakurichi), SRC Kudithangi (Cuddalore), Krishnagiri (Krishnagiri), Kachirayaopalayam (Kallakurichi), Thirukkanur (Puducherry), Paiyur (Krishnagiri) 11 each, Sethiathope (Cuddalore), Anaimaduvu Dam (Salem), Omalur (Salem), Dam (Krishnagiri), Danishpet (Salem) 10 each, Kallakurichi (Kallakurichi), Gomugi Dam (Kallakurichi), Palacode (Dharmapuri), Pelandurai (Cuddalore), Hogenekal (Dharmapuri) 9 each, Vadapudupattu (Tirupathur), Bhuvanagiri (Cuddalore), Bahour (Puducherry), Palacode (Dharmapuri), Denkanikottai (Krishnagiri), TNAU CRI Yethapur (Salem), Vaniyambadi (Tirupathur) 8 each, Dharamapuri (Dharmapuri), Arasoor (Villupuram), Kuppanatham (Cuddalore), Gudalur Bazar (The Nilgiris), Thiruvannamalai (Villupuram), Tirupattur (Tirupathur), Natrampalli (Tirupathur), Ambur (Tirupathur), Lakkur (Cuddalore), Kodanad (The Nilgiris), Tirupattur (Tirupathur), Avalurpettai (Villupuram), Mangalapuram (Namakkal), Kilacheruvai (Cuddalore), Kethandapatti (Tirupathur), Chengam (Tiruvannamalai), Chidambaram (Cuddalore), Vridhachalam (Cuddalore) 7 each,

Kerala:

Kodungallur (Thrissur district) 19, Kottayam 18, Kurudamannil (Pathanamthitta district) 17, Konni (Pathanamthitta district), Kanjirappally (Kottayam district) & Ranni (Pathanamthitta district) 16 each, Kochi (Ernakulam district), Haripad (Alappuzha district) & Peerumedu (Idukki district) 15 each, Perumbavur (Ernakulam district) 14, Aluva (Ernakulam district), Laha (Pathanamthitta district) & Aluva (Ernakulam district) 13 each, Cherthala (Alappuzha district), Kunnathanam (Pathanamthitta district) & Thycauttussery (Alappuzha district) 12 each, Kalamassery (Ernakulam district) 11, Kumarakom (Kottayam district) & Konni (Pathanamthitta district) 8 each, Kozhikode, Vaikom (Kottayam district) & Piravam (Ernakulam district) 7 each.

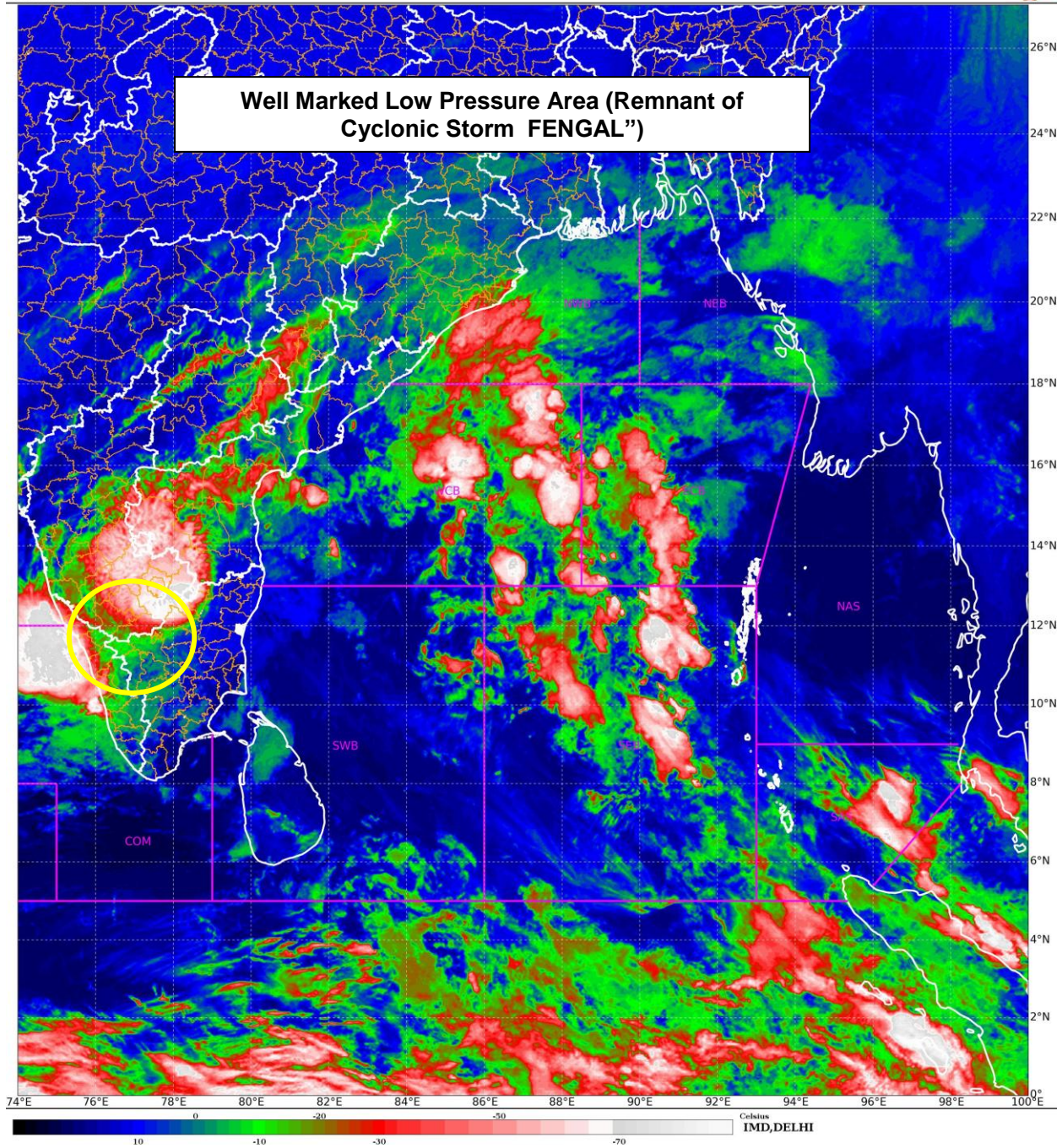
Coastal Andhra Pradesh & Yanam:

Yanam (Yanam) 8

Contact: Cyclone Warning Division, Office of the Director General of Meteorology, India Meteorological Department, Ministry of Earth Sciences, E-mail: cyclonewarningdivision@gmail.com, Website: rsmcnewdelhi.imd.gov.in, Spatial rainfall distribution: Isolated: <25%, A few: 26-50%, Many: 51-75%, Most: 76-100%, Rainfall amount (mm): Heavy rain: 64.5 – 115.5, Very heavy rain: 115.6 – 204.4, Extremely heavy rain: 204.5 or more.

SAT : INSAT-3DR IMG
IMG_TIR1_TEMP 10.8 um
LIC Mercator

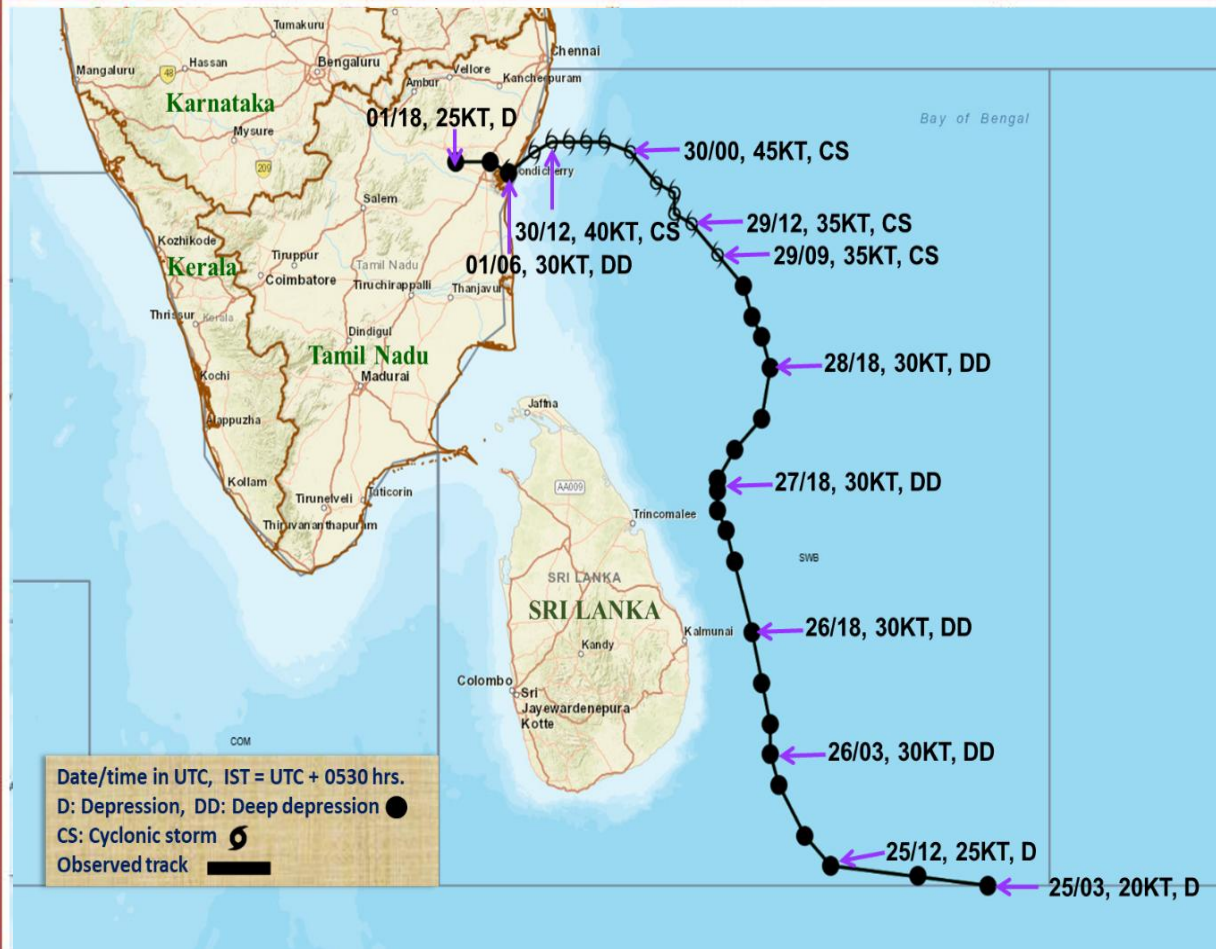
02-12-2024/(0045 to 0112) GMT
02-12-2024/(0615 to 0642) IST



Contact: Cyclone Warning Division, Office of the Director General of Meteorology, India Meteorological Department, Ministry of Earth Sciences, E-mail: cyclonewarningdivision@gmail.com, Website: rsmcnewdelhi.imd.gov.in, Spatial rainfall distribution: Isolated: <25%, A few: 26-50%, Many: 51-75%, Most: 76-100%, Rainfall amount (mm): Heavy rain: 64.5 – 115.5, Very heavy rain: 115.6 – 204.4, Extremely heavy rain: 204.5 or more.



OBSERVED TRACK OF CYCLONIC STORM "FENGAL" OVER SOUTHWEST BAY OF BENGAL DURING 25TH NOVEMBER - 1ST DECEMBER, 2024.

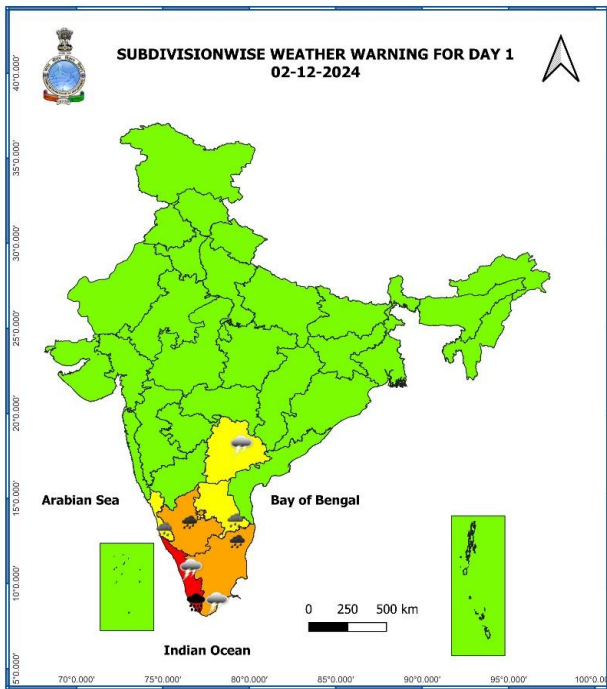


Date/time in UTC, IST = UTC + 0530 hrs.
 D: Depression, DD: Deep depression ●
 CS: Cyclonic storm ☞
 Observed track —

DATE/TIME	: IN UTC
IST	: UTC + 0530
KT	: NAUTICAL MILE S/HOUR = 1.85 KM/HOUR
LPA	: LOW PRESSURE AREA
WML	: WELL MARKED LOW PRESSURE AREA
D	: DEPRESSION (17-27 KT)
DD	: DEEP DEPRESSION (28-33 KT)
CS	: CYCLONIC STORM (34-47 KT)
SCS	: SEVERE CYCLONIC STORM (48-63 KT)
VSCS	: VERY SEVERE CYCLONIC STORM (64-89 KT)
ESCS	: EXTREMELY SEVERE CYCLONIC STORM (90-119 KT)
SuCS	: SUPER CYCLONIC STORM (≥120 KT)

- LESS THAN 34 KT
- ☞ 34-47 KT
- ☞ ≥ 48 KT
- OBSERVED TRACK
- FORECAST TRACK
- ▲ CONE OF UNCERTAINTY

Contact: Cyclone Warning Division, Office of the Director General of Meteorology, India Meteorological Department, Ministry of Earth Sciences, E-mail: cyclonewarningdivision@gmail.com, Website: rsmcnewdelhi.imd.gov.in, Spatial rainfall distribution: Isolated: <25%, A few: 26-50%, Many: 51-75%, Most: 76-100%, Rainfall amount (mm): Heavy rain: 64.5 – 115.5, Very heavy rain: 115.6 – 204.4, Extremely heavy rain: 204.5 or more.



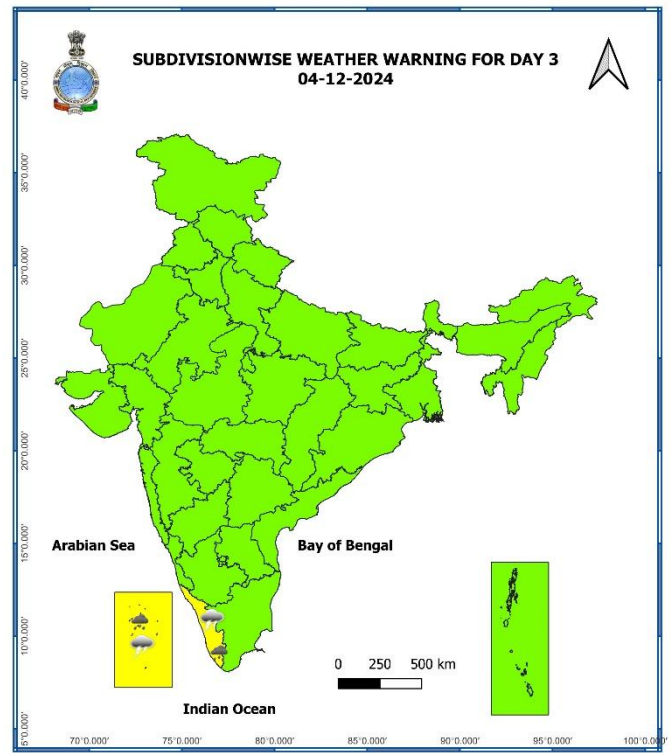
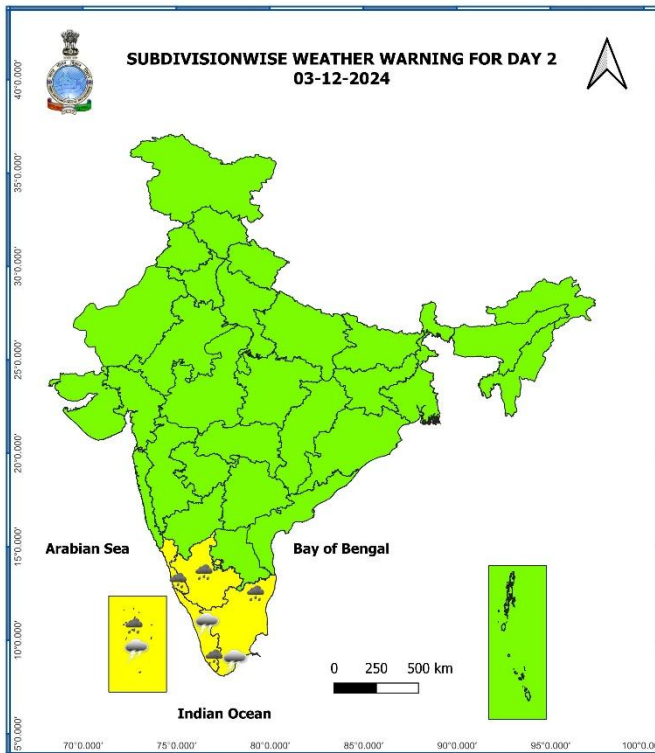
- Fog
- Heavy Rain
- Very Heavy Rain
- Extremely Heavy Rain
- Thunder & Lightning
- Hailstorm
- Dust Raising Winds
- Heavy Snow
- Dust Storm
- Heat Wave
- Warm Night
- Hot Day
- Hot & Humid
- Cold Wave
- Cold Day
- Ground Frost
- Strong Surface Winds

COLOUR CODED WARNING

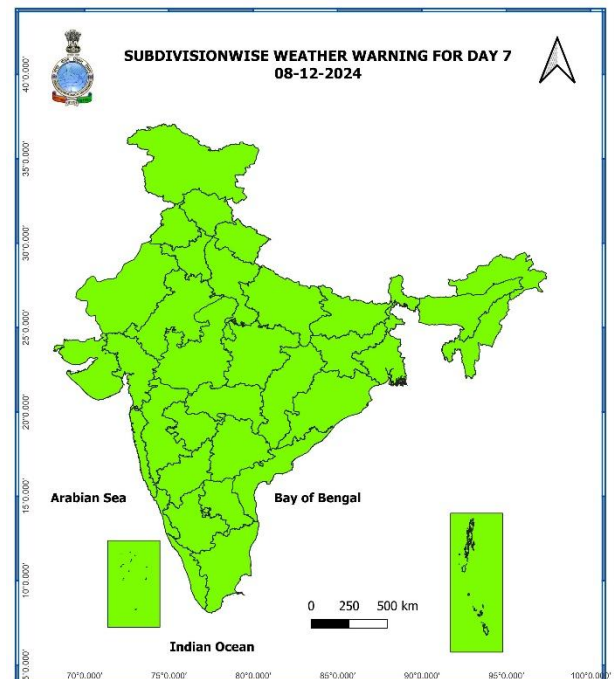
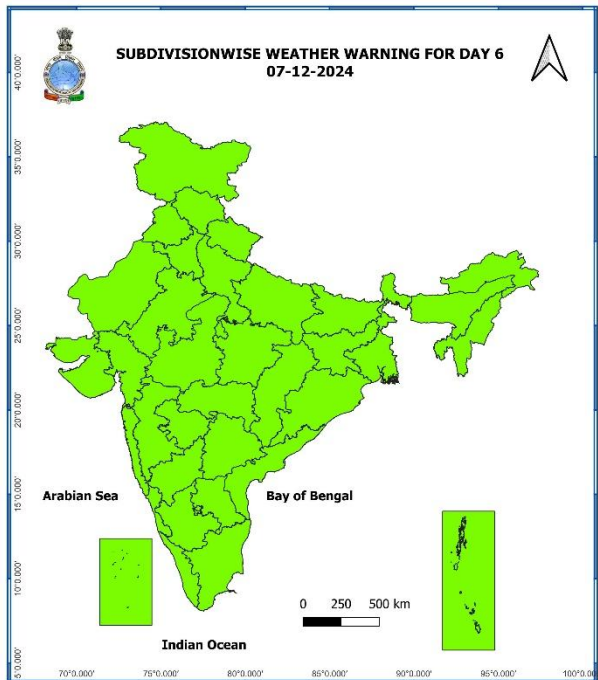
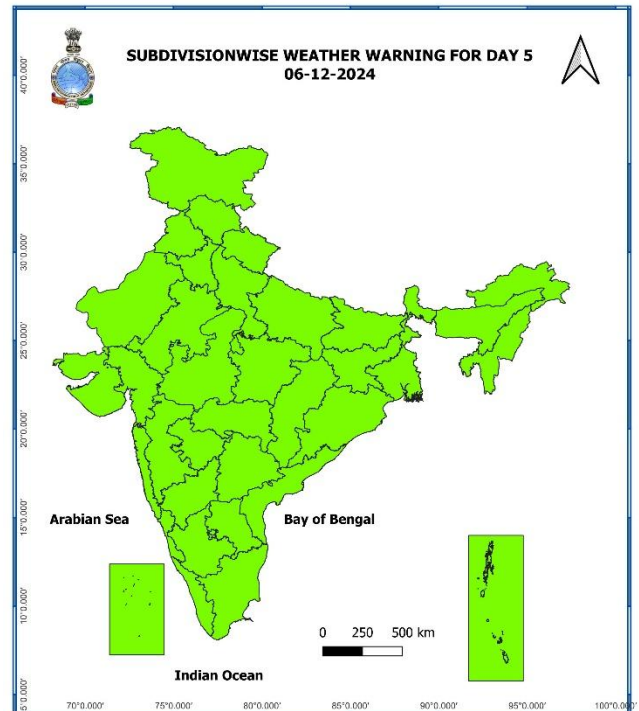
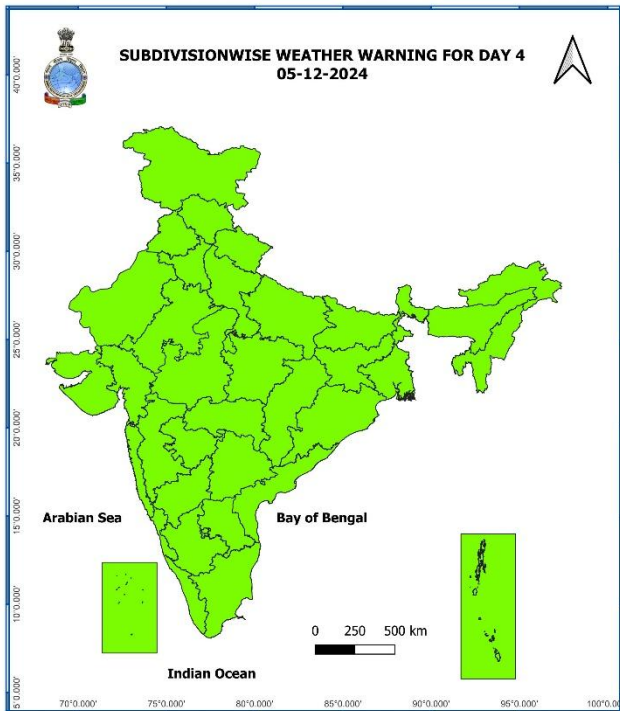
- No Warning (No Action)
- Watch (Be Aware)
- Alert (Be Prepared To Take Action)
- Warning (Take Action)

Probabilistic Forecast

Terms	Probability of Occurrence (%)
Unlikely	< 25
Likely	25 - 50
Very Likely	50 - 75
Most Likely	> 75



Contact: Cyclone Warning Division, Office of the Director General of Meteorology, India Meteorological Department, Ministry of Earth Sciences, E-mail: cyclonewarningdivision@gmail.com, Website: rsmcnewdelhi.imd.gov.in, Spatial rainfall distribution: Isolated: <25%, A few: 26-50%, Many: 51-75%, Most: 76-100%, Rainfall amount (mm): Heavy rain: 64.5 – 115.5, Very heavy rain: 115.6 – 204.4, Extremely heavy rain: 204.5 or more.



- Action may be taken based on **ORANGE AND RED COLOUR** warnings.
- Vulnerable regions likely urban and hilly areas action may be initiated for heavy rainfall warning.
- As the lead period increases forecast accuracy decreases.

Contact: Cyclone Warning Division, Office of the Director General of Meteorology, India Meteorological Department, Ministry of Earth Sciences, E-mail: cyclonewarningdivision@gmail.com, Website: rsmcnewdelhi.imd.gov.in, Spatial rainfall distribution: Isolated: <25%, A few: 26-50%, Many: 51-75%, Most: 76-100%, Rainfall amount (mm): Heavy rain: 64.5 – 115.5, Very heavy rain: 115.6 – 204.4, Extremely heavy rain: 204.5 or more.